

DONALDSON BROWN

Riverfront Event Center

Easy to reach, hard to leave behind



Wedding Brochure

*W*ith picturesque riverfront views 200 feet above the Susquehanna River, Donaldson Brown Riverfront Event Center is the ideal location for those seeking to add grandeur to their big day. From fairy-tale weddings to flawless events, the estate provides an elegant setting in Port Deposit, Md. Donaldson Brown will leave a lasting impression.



DONALDSON BROWN

Riverfront Event Center

In an easy-to-reach location just minutes from Interstate 95, the Donaldson Brown Riverfront Event Center is located in the northern tip of Maryland, near Port Deposit, in Cecil County. It is easily accessible from several surrounding states. And once there, it is hard to leave behind.

The Mansion

Guests will enjoy the beautiful architecture of the mansion. From floor-to-ceiling windows, ornate moldings, original fixtures, elegant spiral stairways, arched doorways, antique chandeliers, and numerous beautiful entryways, the mansion resonates elegance. Those celebrating their vows can hold an outdoor reception on the property's lawn, or a smaller affair can be held inside the manor banquet room.

The Pavilion — COMING IN SUMMER 2026

Celebrate your special day in our one-of-a-kind, breathtaking 40-foot-by-90-foot Amish-crafted, mahogany-stained timber frame pavilion. With soaring ceilings, a striking black-and-white dance floor, a stunning dimmable lighting package beneath three glowing cupolas, and the historic Carriage House weathervane, every detail creates an unforgettable, romantic ambience as you and your guests enjoy sunset views overlooking the Susquehanna River. Larger and stronger than a tent, the Donaldson Brown pavilion is designed to withstand adverse weather — without poles, muddy grass, or added “rain fees.” Our elegant sliding glass panels, crafted in the Netherlands and featured for the first time on a pavilion on the East Coast, allow for seamless, year-round use. From brand-new tables and chairs to heaters, fans, and a flawless solid foundation, up to 200 guests can mingle, dine, and dance in a space offering beauty, comfort, and timeless sophistication — an experience they'll talk about long after the last dance.



Pavilion rendering — Design details may vary from the final structure.

Overnight Accommodations

For overnight guests, the mansion features 17 beautifully decorated rooms, many with period furnishings. Each room includes modern amenities, such as Hilton mattresses with premium bedding for exceptional comfort.

Additional amenities include:

- Beautifully monogrammed towels featuring the Donaldson Brown Riverfront Event Center pineapple
- Luxurious handcrafted cedarwood soaps, shampoos, and lotions from Hagerstown, Md.
- Spalike makeup towels
- Freshly brewed coffee and specialty tea service on both floors
- Bottled water

For groups requiring more than the mansion's 24 beds, the Carriage House offers eight additional rooms. Larger groups may also reserve room blocks at Great Wolf Lodge, located three miles away, through Donaldson Brown's executive partnership.

DONALDSON BROWN

Riverfront Event Center

The Estate

The scenic grounds of the estate include manicured lawns, beautiful gardens, an enormous greenhouse, the original carriage house, a sprawling fountain flanked by architectural ponds, and a panoramic view of the Susquehanna with tree-lined banks. The property offers opportunities for a variety of lawn games, a pavilion, ceremony area, and a stunning backdrop for portraits.

History

The former estate of renowned industrialist and DuPont executive Frank Donaldson Brown and his wife, the former Greta du Pont Barksdale, this stunning manor has presided over the Susquehanna River since 1939. The mansion's red-brick façade is a perfect example of the Georgian-Revival style popular at the time. One of Maryland's most iconic houses, it was bequeathed to the University of Maryland in the 1960s.

Tours

Wedding site tours are complimentary and available by request. Historic tours are also available for those who would enjoy learning about classic architecture and the Brown family. These tours incur a fee and are by appointment only.



DONALDSON BROWN
Riverfront Event Center

The Perfect Wedding

BEFORE THE EVENT

The Donaldson Suite

The perfect place for wedding preparations, Frank and Greta's suite measures 27 feet by 22 feet. It features a classic dressing area off the main room with multiple mirrored areas and closet space for formal attire. The master bath is astounding in size and space. The room also features an antique writing desk, a sitting area, and a fireplace flanked by crystal beaded sconces.



The Frog & Bark Suite

Relax and prepare for the big moment in the room that once belonged to the Browns' two eldest sons. This spacious room features views of the Susquehanna River from six large windows and measures 24 feet by 23 feet.



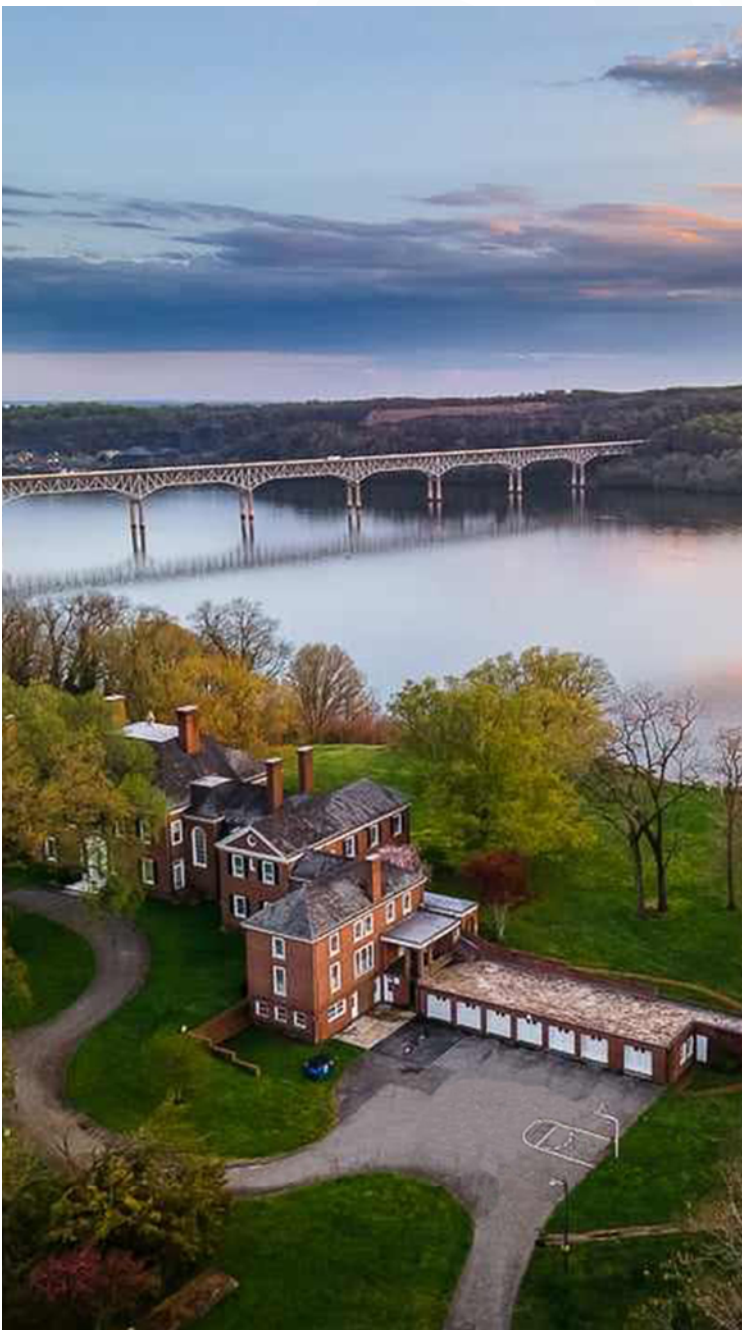
DONALDSON BROWN

Riverfront Event Center

DURING THE EVENT

The View

Guests can gaze down upon the waterfront town of Port Deposit or the bridge in the distance and take in an unparalleled view of the Susquehanna River.



DONALDSON BROWN

Riverfront Event Center

DURING THE EVENT

Cocktails

The Georgian mansion offers multiple rooms to spread out your cocktail areas: the classic wood-paneled Chesapeake Room, the game room, the entrance area, the library, the Susquehanna Room, the breakfast room, or even outdoors on the lawn. The options are limitless. The bar area in the South Sunroom comes equipped with an ice maker, large refrigerator, multiple shelves, and sink to meet your bartender's needs.



The Staff

Couples can celebrate in the lap of luxury, taken care of by the manor's attentive staff. With a full-time chef utilizing recipes of old along with a mix of new favorites, the staff can create a menu for any palate. They can provide catering for events up to 50 guests, and welcome outside vendors for larger gatherings. The management is happy to recommend some of the area's best wedding professionals. A dedicated day-of wedding coordinator will ensure everything runs smoothly so you can enjoy your special day. She will coordinate vendors, manage the timeline, and serve as the point of contact for any questions.

DONALDSON BROWN

Riverfront Event Center

AFTER THE EVENT

Historic Accommodations

The mansion boasts seven spacious suites with private baths. Each suite belonged to a member of the Brown family in the 1930s, with two offering impressive dressing rooms featuring original cabinetry. Each suite has unique moldings and period furniture with views overlooking the river or the lawns. All of the 17 bedrooms have been upgraded with high-quality Hilton mattresses and luxury linens for premium comfort. Additionally, there are 10 bedrooms with shared baths for private groups. If more sleeping arrangements are needed, there are eight rooms available in the Carriage House. Overnight guest accommodations in the Carriage House cost \$1,000 per night. Larger groups may also reserve room blocks at Great Wolf Lodge, located three miles away, through Donaldson Brown's trusted partnership.



Breakfast

Allow our chef to spoil your group with classic breakfast options such as a waffle bar, scrambled eggs, French toast casserole, or spinach/sausage quiche. The staff will work closely with you to define a menu that will amaze your overnight guests.



Rehearsal Package

\$1,000 space rental

Rehearsal dinner:

- Two-hour buffet meal served in our Crystal Dining Room or wood timber pavilion
- Accommodates up to 60 guests
- Customizable three-course meal: Selections feature freshly made salads, two entrées, two side dishes, and our house-made roll cakes (pumpkin, strawberries and cream, or chocolate)
- Cost per person: \$55 to \$100 based upon menu selections

All pricing is subject to change.

Wedding Packages

Pineapple Wedding Package - \$6,000

Accommodates up to 50 people; rental of first floor of mansion and access to the 23-acre grounds (outdoor seating and catering not included).

This package includes:

- One hour use of estate for engagement photos
- One-hour rehearsal
- Two-hour set-up prior to wedding
- Five-hour wedding
- One-hour cleanup post-wedding
- Two spacious dressing rooms for wedding party
- Crystal Dining Room
- Game room
- Banquet room
- Breakfast room
- Entertainment room for dancing
- Multiple sitting rooms
- The Chesapeake Room and The Susquehanna Room
- Two sweeping staircases for classic indoor photos

Catering available. Please inquire for pricing. Overnight accommodations are available at an extra charge.

All pricing is subject to change.

DONALDSON BROWN

Riverfront Event Center

Susquehanna Wedding Package - \$13,000

Accommodates up to 150* people; includes rental of first floor of mansion and access to the 23-acre grounds including the pavilion.

This package includes:

- One hour use of estate for engagement photos
- One-hour rehearsal
- Two-hour set-up prior to wedding
- Five-hour wedding
- One-hour cleanup post-wedding
- Pavilion reception area (90 foot by 40 foot) with 360-degree views overlooking the Susquehanna River
- Romantic pavilion lighting
- Dance floor in pavilion
- Gold Chivari chairs and 6' round tables
- One-time kitchen usage for licensed caterer
- Dumpster usage
- Table and chair arrangement in pavilion
- Two spacious dressing rooms for wedding party use
- Game room
- Crystal Dining Room
- Breakfast room
- Multiple sitting rooms
- The Chesapeake Room and The Susquehanna Room
- Two sweeping staircases for classic indoor photos
- Dedicated coordinator who will help ensure everything runs smoothly and will handle general issues so you can enjoy your day

*Larger parties can be accommodated. Additional costs will be calculated based upon the number of guests. This package does not include catering. However, staff is happy to suggest catering options. Caterers must be licensed and insured.

All pricing is subject to change.



DONALDSON BROWN
Riverfront Event Center

Chesapeake Wedding Package — \$15,000

Includes overnight accommodations for 14 guests, Saturday afternoon through Sunday morning.

Accommodates up to 150* people; includes rental of first floor of mansion and access to the 23-acre grounds including the pavilion.

This package includes everything in the Susquehanna Wedding Package plus:

- Overnight accommodations in our seven suites for 14 guests — additional rooms available upon request
- Breakfast for overnight guests
- Check in Saturday at 1 p.m.
- Checkout Sunday at 11 a.m.

*Larger parties can be accommodated. Additional costs will be calculated based upon the number of guests. This package does not include catering. However, staff is happy to suggest catering options. Caterers must be licensed and insured.

All pricing is subject to change.

*Port Deposit Full Weekend
Wedding Package — \$18,000*

Friday evening through Sunday morning.

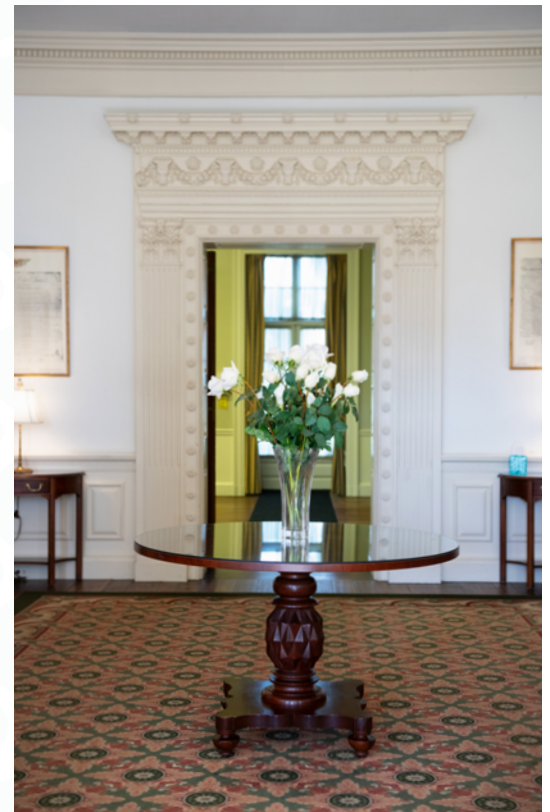
Accommodates up to 150* people; includes rental of first floor of mansion and access to the 23-acre grounds including the pavilion.

This package includes everything in the Susquehanna Wedding Package plus:

- Two overnight accommodations in our seven suites for 14 guests — additional rooms available upon request
- Breakfast for overnight guests
- Check-in Friday at 5 p.m.
- Checkout Sunday at 11 a.m.

*Larger parties can be accommodated. Additional costs will be calculated based upon the number of guests. This package does not include catering. However, staff is happy to suggest catering options. Caterers must be licensed and insured.

All pricing is subject to change.

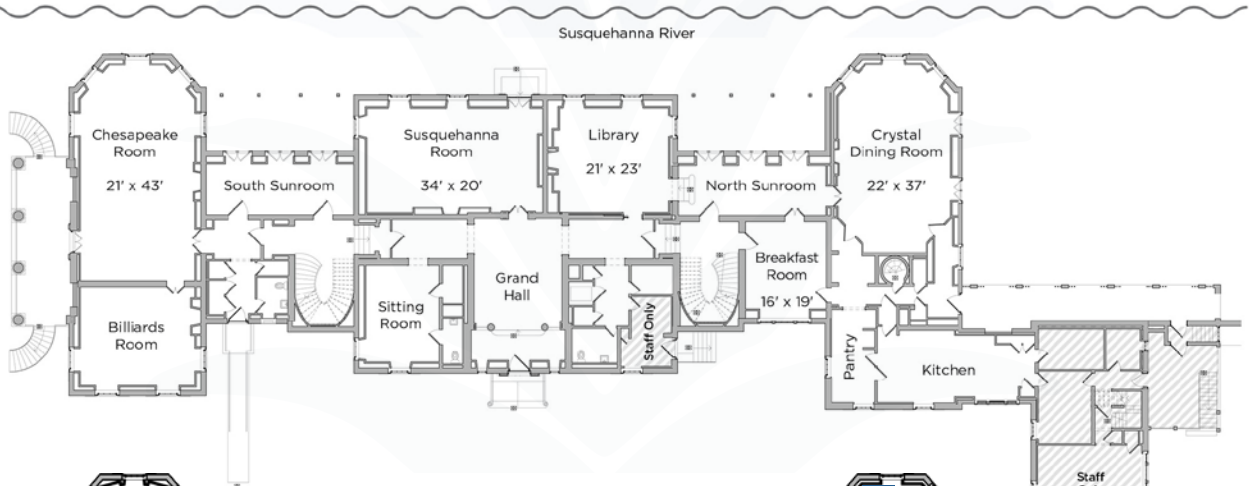


DONALDSON BROWN

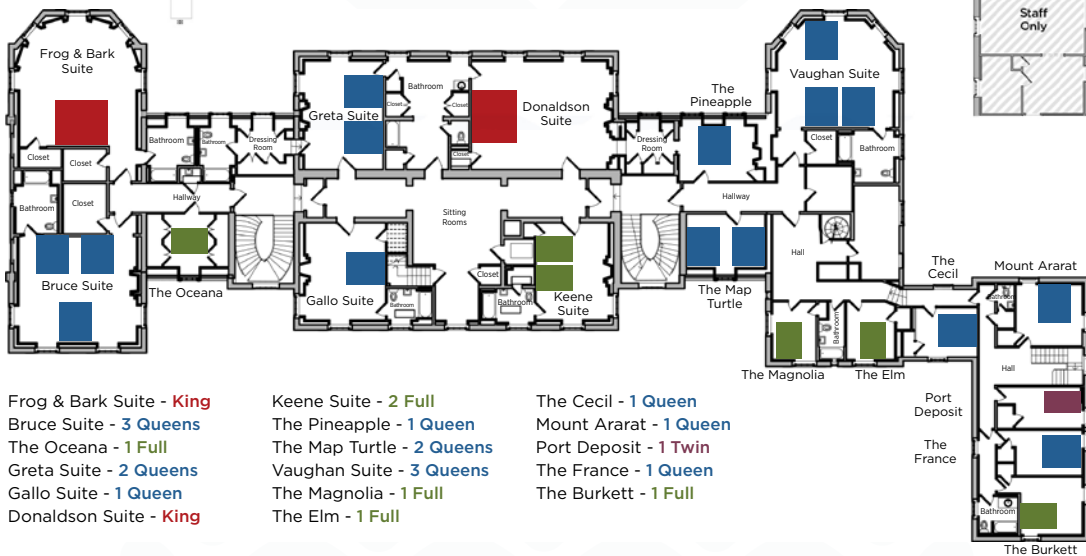
Riverfront Event Center

Room Layout

FIRST FLOOR



SECOND FLOOR

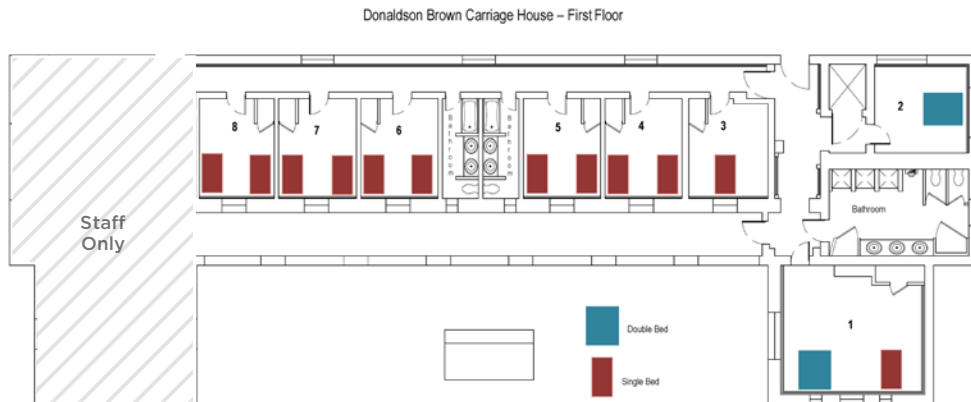


- Frog & Bark Suite - King
- Bruce Suite - 3 Queens
- The Oceana - 1 Full
- Greta Suite - 2 Queens
- Gallo Suite - 1 Queen
- Donaldson Suite - King

- Keene Suite - 2 Full
- The Pineapple - 1 Queen
- The Map Turtle - 2 Queens
- Vaughan Suite - 3 Queens
- The Magnolia - 1 Full
- The Elm - 1 Full

- The Cecil - 1 Queen
- Mount Ararat - 1 Queen
- Port Deposit - 1 Twin
- The France - 1 Queen
- The Burkett - 1 Full

CARRIAGE HOUSE - FIRST FLOOR



DONALDSON BROWN

Riverfront Event Center

200 Mount Ararat Farm Road
Port Deposit, MD 21904

Our staff is always willing to help you find the perfect wedding options.



410-378-2555



DonaldsonBrown@umaryland.edu



DonaldsonBrown.com



DonaldsonBrownRiverFront



donaldsonbrowncenter



UNIVERSITY
of MARYLAND
BALTIMORE